

F21025501 VariMax25 CE

Control unit for stepper motor

Also available in Modbus version



- User friendly
- Stable aluminium enclosure
- Compact build dimensions
- Input signal 0-10 V
- Remaining alarms
- CE-approved
- Five-year product warranty

Set of EMC-glands are included in VariMax25 CE

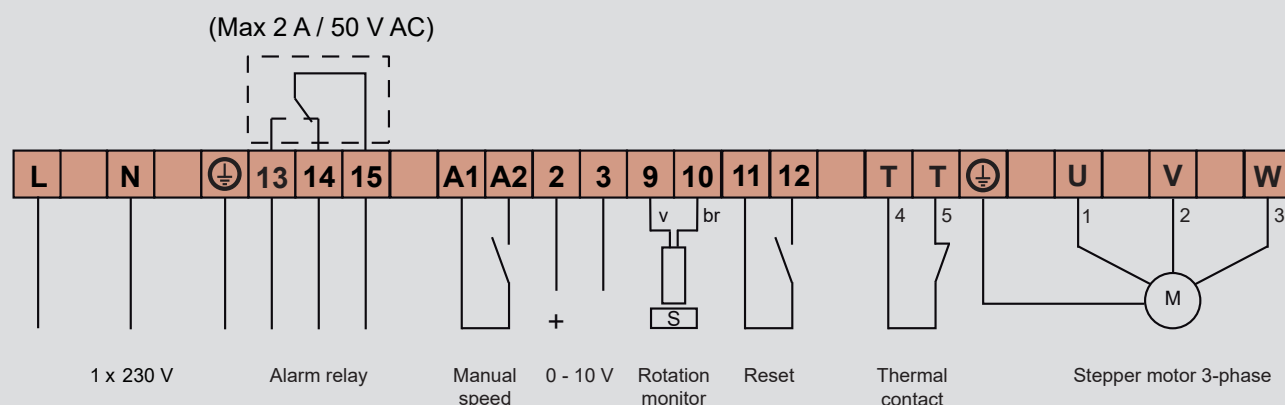
VariMax25 CE is a control unit and combines small dimensions with large capacity and is very easily mounted and run.

VariMax25 CE is intended for thermal rotor diameters up to 1500 mm with a rotor speed of max. 12 rpm. If the rotor requires a faster rotor speed, the rotor diameter should be reduced.

VariMax25 CE is an alternative to our control units MiniMax and MicroMax.

The control unit should be combined with our VariMax-motor25 CE.

CONNECTION DIAGRAM



Description of functions

Together with the VariMax-motor25 CE, VariMax25 CE constitutes a modern combination of specific additional functions for an optimal run of a rotary heat exchanger. The VariMax-motor25 CE is a stepper motor with a large torque within the complete speed area. This means that the speed of a thermal rotor is between 0,1-12 rpm.

- Input signal 0-10 V** The speed of the rotor is regulated by the control unit so that the efficiency of the heat exchanger is in proportion to the input signal from the central control.
- Cleaning function** When the rotor has stopped for 10 minutes, the cleaning function is activated and the rotor starts to rotate. As a warning, the rotor first rotates for 6 seconds at a motor speed of 5 rpm, the rotor is then stationary for 3 seconds. After this, the actual cleaning starts, for a random time, between 10 to 20 seconds with the motor at 20 rpm.
- Rotation monitor** Alarms and trips if pulse is not received every 30 minutes at minimum speed and every 20 seconds at maximum speed. The time between these speed is linear. The function is disconnectable through DIP-switches. The alarm is remaining.
- Other alarms** The control unit trips and alarms at over- or under voltage, overtemperature in the control unit, overtemperature in the motor, short circuit or earth faulty. All alarms are remaining.
- Manual speed** Possibility of controlling the speed via separate potentiometer, whatever the value of the input signal.
- Test** DIP-switches for manual run at low- or high speed.

Technical data

VariMax25 CE	
Connection voltage	1x230-240 V +/-15% 50/60 Hz
Power input max.	110 W
Input current	0,9 A
External fuse max.	10 A
Output voltage*)	3x0-280 V
Output current, max	0,7 A
Internal fuse**)	2,5 AT

Output frequency	0-290 Hz
Acceleration- and retardation time	30 sec
Ambient temperature not condensing	-30 - +45 °C -40 - +45 °C***)
Protection form	Type 1
Weight	1,1 kg
Dimensions, HxWxD	173x187x70 mm

*) Exact value can not be achieved with a digital measuring instrument

***) The fuse protects both motor and electronics

***) Note, at -40 °C, the control unit must be connected to power all the time