

## CONTROL UNIT

### F21008201 MicroStart



- User friendly
- Stable aluminium enclosure
- Compact building dimensions
- Input signal 0-10 V
- Remaining alarms
- CE-approved
- Two-year product warranty

Set of EMC-glands as an option

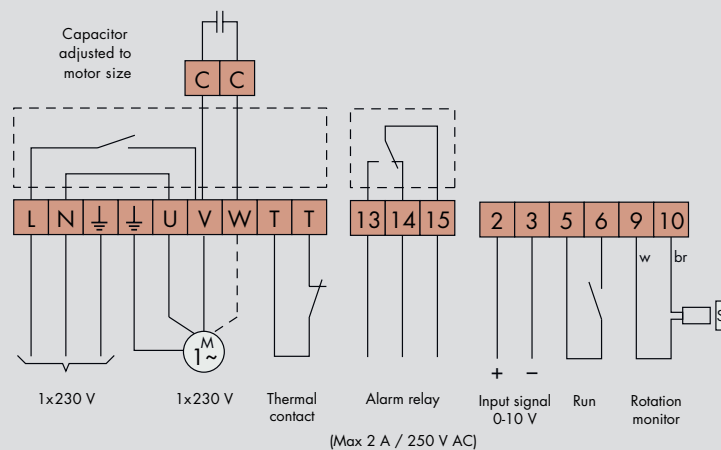
MicroStart is a hybrid control unit between the simple on/off-control unit and the more advanced stepless control unit for rotary heat exchangers.

The control unit combines small dimensions with large capacity and is very easily mounted and run.

MicroStart is intended for rotors up to diameter 1500 mm.

MicroStart is available as an included component in any of our popular drive set.

## CONNECTION DIAGRAM



## Description of functions

MicroStart, enclosed IP54, is a control unit intended for single phase motors. The motor capacitor can be mounted in the control unit. MicroStart has a built-in soft start-/soft stop function to spare motor and gear. It also has the additional functions required for easily running a rotary heat exchanger.

- Input signal 0-10 V** MicroStart has a pause/running time function controlled by the input signal, with a total cycle time of 60 seconds. Depending on the level of the input signal, the proportion between pause and running time changes. If the input signal is below the threshold value 0,5 V, the rotor stops. MicroStart has a built-in shift of the input signal, which implies that the efficiency of the rotor becomes proportional to the input signal.
- Cleaning function** MicroStart has a build-in cleaning function. When the rotor has been still for 45 minutes, the cleaning function is activated and the rotor rotates for 10 seconds.
- Rotation monitor** MicroStart has a built-in rotation monitor. A magnetic sensor is connected to the control unit with a built-in hall element and a magnet with it. The control unit trips if a pulse is not received every 5 minutes.
- Other alarms** The control unit trips at tripped thermal contact in the motor.
- Test** DIP-switches for manual run.

## Technical data

	MicroStart
Motor output max.	90 W
Motor current max.	1 A
Connection voltage	1x230 V, +/-10% 50Hz
Output voltage	1x230 V
Internal fuse*)	1 AT
External fuse max.	10 A
Ambient temp. non condensing	-25 - +45 °C
Protection form	IP54
Weight	0,6 kg
Dimensions, HxWxD	110x164x60mm

\*) The fuse protects both motor and electronics