

## CONTROL UNIT

### F21037301      **MicroMax370**



- User friendly
- Stable aluminium enclosure
- Compact build dimensions
- Input signal 0-10 V
- Remaining alarms
- CE-approved
- Two-year product warranty

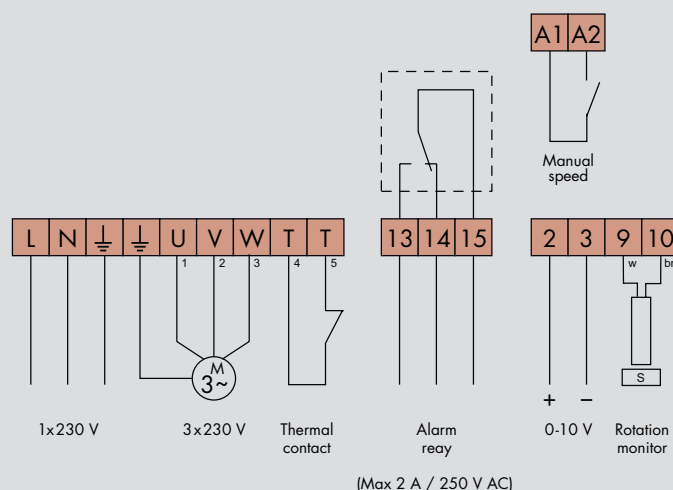
Set of EMC-glands as an option

MicroMax, a series of control units for rotary heat exchangers. The control units combine small dimensions with large capacity and are very easily mounted and run.

MicroMax370 is intended for rotor diameters up to 3500 mm with a rotor speed of max. 12 rpm. If the rotor requires a faster rotor speed, the rotor diameter should be reduced.

All control units in the MicroMax-series are available as included components in any of our popular drive set.

## CONNECTION DIAGRAM



## Description of functions

MicroMax is a series of modern control units with specific additional functions for an optimal run of a rotary heat exchanger.

<b>Input signal 0-10 V</b>	The speed of the heat exchanger and its efficiency is regulated stepless by the control unit so that the speed of the rotor is in proportion to the input signal from the central control. If the input signal is below the set up threshold value, the rotor will stop.
<b>Boost</b>	Torque boost at low rpm.
<b>Threshold value</b>	Value, adjustable between 0-2 V.
<b>Cleaning function</b>	When the rotor has stopped for 30 minutes, the cleaning function is activated and the rotor rotates at minimum rpm for 10 seconds.
<b>Rotation monitor</b>	The rotation monitor stops the control unit and alarms if the rotor stops rotating. The control unit trips if it does not receive pulses every 5 minutes.
<b>Other alarms</b>	The control unit trips and alarms at over- or under voltage, short circuit or earth faulty as well as tripped thermal contact in the motor. All alarms are remaining.
<b>Manual speed</b>	Possibility of externally controlling the maximum speed.
<b>Test</b>	DIP-switches for manual run on low- or high speed.

## Technical data

### MicroMax370

Connection voltage	1x230-240 V, +/-15 % 50/60 Hz	Overload 2 min/30 min	3,5 A
Power input, max.	650 W	Internal fuse **)	4 AT
Input current, max.	2,8 A	Acceleration time	(Fixed) 30 sec
External fuse, max.	10 A	Retardation time	(Fixed) 30 sec
Output voltage *)	3x0-230 V	Ambient temp. non condensing	-25 - +45 °C
Output frequency	5-100 Hz	Protection form	IP54
Min. frequency	(Fixed) 5 Hz	Weight	1,1 kg
Max. frequency	40-100 Hz	Dimensions, HxWxD	198x165x60mm
Motor output, max.	370 W		
Motor current, max.	1,9 A		

\*) Exact value cannot be obtained with a digital measuring instrument  
 \*\*) The fuse protects both motor and electronics