

STEPPER MOTOR

Stepper motor 3-phase 325 V DC

Used together with VariMax100 CE

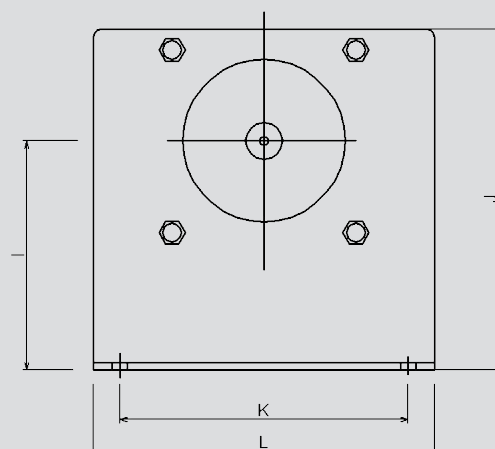
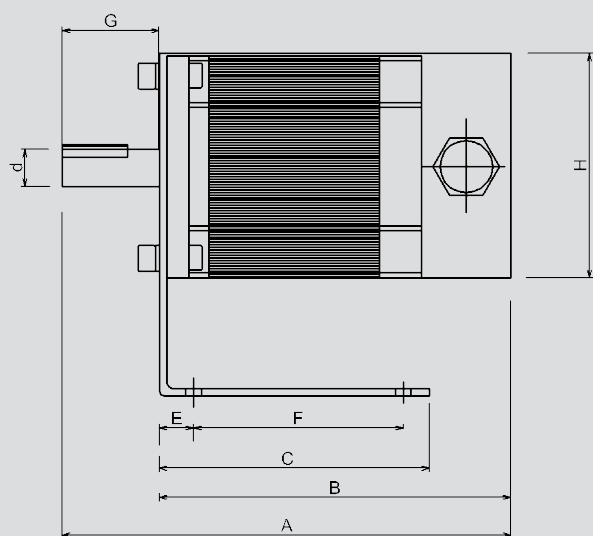
F22100501

VariMax-motor100 CE



- Adapted for variable speed control
- Built-in thermal contact, drawn to terminal
- Compact built-in dimensions
- CE-approved
- Five-year product warranty

DIMENSIONS



Construction dimensions (mm)

MOTOR	A	B	C	d	E	F	G	H	I	J	K	L
100	177	145	103	19	13	80	35	110	87	142	130	150

Technical data

VariMax-motor CE	100
Max torque	10 Nm
Min rotation speed	1 rpm
Max rotation speed	400 rpm
Motor temp. mantle max	110 °C
Ambient temperature	-30 - +45 °C -40 - +45 °C *)
Protection form	IP54
Weight incl. motor bracket	8,4 kg

*) Note, at -40 °C, the control unit must be connected to power all the time

Max rotor diameter at rotor speed 12 rpm

Motor	100
Rotor diameter	3900 mm