

## MOTOR 1-PHASE

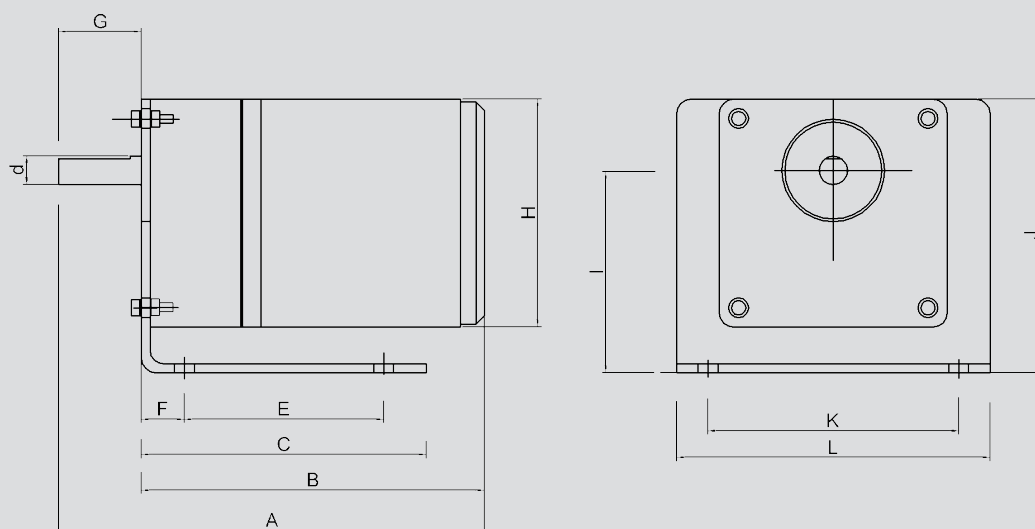
# In line helical gear motor 1x230 V, 50 Hz

F22040100      40/100



- Adapted for on/off run alternatively by MicroStart
- Built-in thermal contact, not drawn to terminal
- Compact built-in dimensions
- Two-year product warranty

## DIMENSIONS



### Construction dimensions (mm)

MOTOR	A	B	C	d	E	F	G	H	I	J	K	L
40/100	180	150	100	12	60	15	30	87	80	112	88	110

### Technical data at 50 Hz

Motor	40/100
Rated output	40 W
Rated current at 230 V	0,39 A
Rated speed	100 rpm
Gear ratio	1:12,5
Rated torque	2,8 Nm
Protection form	IP23
Connection voltage	1x230 V
Weight including motor bracket	3,6 kg
Motor capacitor	2,0 uF

### Max rotor diameter at rotor speed 12 rpm

Motor	40/100
Rotor diameter	1050 mm