

STEPPER MOTOR

Stepper motor 3-phase 325 V DC

Used together with VariMax25 CE

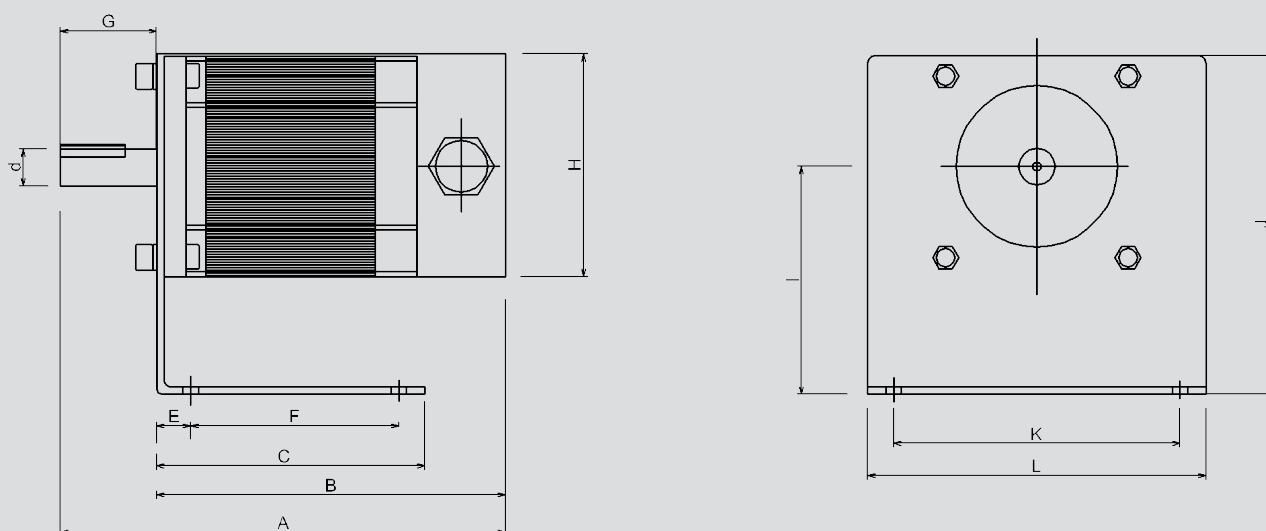
F22025501

VariMax-motor25 CE



- Adapted for variable speed control
- Built-in thermal contact, drawn to terminal
- Compact built-in dimensions
- CE-approved
- Five-year product warranty

DIMENSIONS



Construction dimensions (mm)

MOTOR	A	B	C	d	E	F	G	H	I	J	K	L
25	141	105	103	14	13	80	40	85	67	110	110	130

Technical data

VariMax-motor CE	25
Max torque	2 Nm
Min rotation speed	1 rpm
Max rotation speed	350 rpm
Motor temp. mantle max	110 °C
Ambient temperature	-30 - +45 °C -40 - +45 °C *)
Protection form	IP54
Weight incl. motor bracket	2,6 kg

*) Note, at -40 °C, the control unit must be connected to power all the time

Max rotor diameter at rotor speed 12 rpm

Motor	25
Rotor diameter	1500 mm